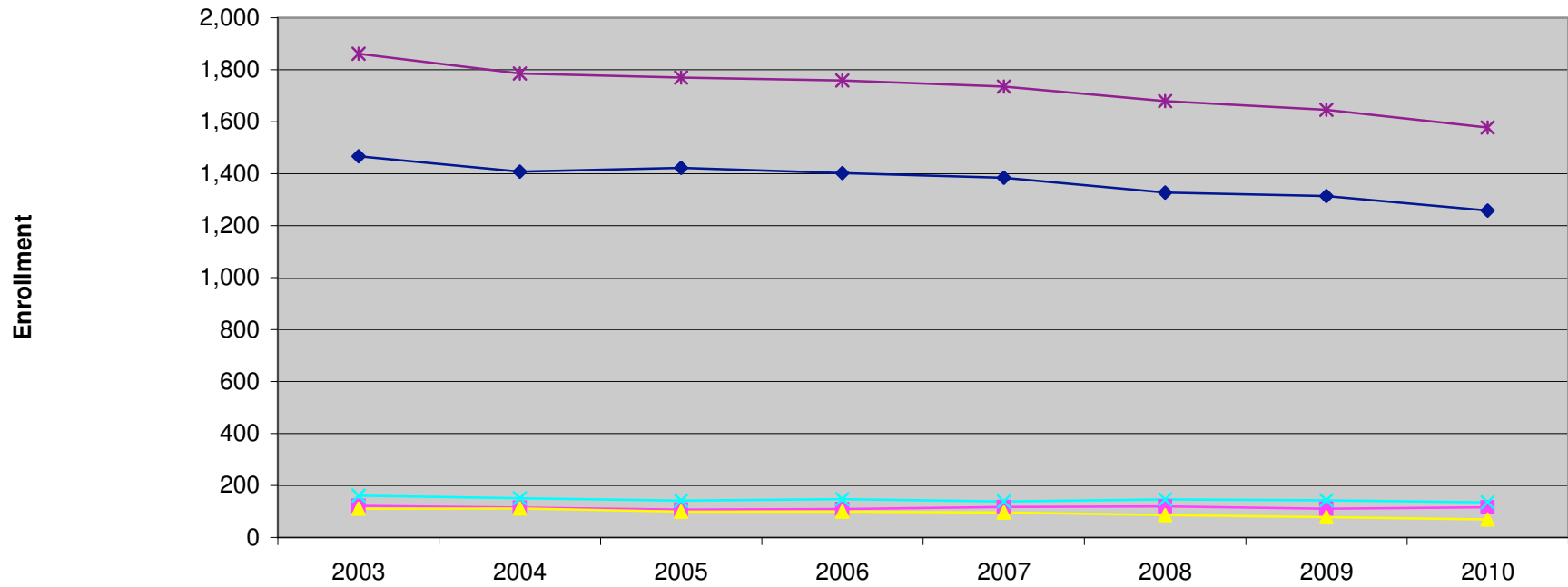
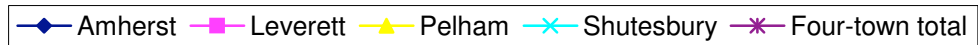


Appendix B
K-6 Enrollment Trends 2003-2010 (excluding choice)



	'2003	'2004	'2005	'2006	'2007	'2008	'2009	'2010
—◆— Amherst	1,467	1,408	1,422	1,402	1,384	1,327	1,314	1,258
—■— Leverett	122	115	107	110	117	120	111	116
—▲— Pelham	111	112	99	100	96	86	78	69
—×— Shutesbury	161	151	142	147	138	146	143	135
—*— Four-town total	1,861	1,786	1,770	1,759	1,735	1,679	1,646	1,578

Year



ENROLLMENT TRENDS FROM 2002-3 TO 2009-10

Fiscal Yr	District Name	PK	K	Gr.1	Gr.2	Gr.3	Gr.4	Gr.5	Gr.6	Gr.7	Gr.8	Gr.9	Gr.10	Gr.11	Gr.12	Total PK-12	Total K-12
-----------	---------------	----	---	------	------	------	------	------	------	------	------	------	-------	-------	-------	-------------	------------

Comparison of Fiscal Year 2010 and Fiscal Year 2003 ("-" is decrease in enrollment)

District Name	PK	K	Gr.1	Gr.2	Gr.3	Gr.4	Gr.5	Gr.6	Gr.7	Gr.8	Gr.9	Gr.10	Gr.11	Gr.12	Total PK-12	Total K-12	
Difference Amherst	6	-47	-20	-21	-28	-32	-7	-54	0	0	0	0	0	0	-203	-209	
Difference Leverett	8	3	2	-13	24	2	1	-2	0	0	0	0	0	0	25	17	
School Choice	0	3	4	0	7	5	3	1	0	0	0	0	0	0	23	23	
local	8	0	-2	-13	17	-3	-2	-3	0	0	0	0	0	0	2	-6	
Difference Pelham	0	5	1	4	1	2	2	-1	0	0	0	0	0	0	14	14	
School Choice																47	
local																-33	
Difference Shutesbury	-3	0	4	-7	-10	11	-16	-8	0	0	0	0	0	0	-29	-26	
Difference Amherst-Pelham	0	0	0	0	0	0	0	0	-80	-106	-38	-64	-74	-17	-379	-379	
Difference Four-town total	11	-42	-17	-37	-20	-22	-23	-66	-80	-106	-38	-64	-74	-17	-595	-606	
																Excluding Pelham choice students	-653